



ST. STEPHEN'S
Episcopal Church

CAPITAL IMPROVEMENT CAMPAIGN

A HAZARD NO LONGER



June 22, 2023

The threshold on the Office/Church double doors has been replaced with a fresh concrete ramp. The original concrete never fully met the doors which caused a temporary fix of a wooden threshold that still caused a major tripping hazard.



PARISH HALL HVAC REPLACED



July 25, 2023

The Parish Hall HVAC system was replaced with a new model. This much-needed upgrade will provide better cooling, heating, and air circulation in not only the Teer Chapel, but the Parish Hall as well.



REPLACED/UPDATED CAMPUS SIGNS

September 28, 2023

The entire campus had all navigational signs replaced. The front welcome sign facing Rugby Road will also be replaced soon. Another much-needed and long overdue upgrade not only for our parishioners, but also for the many community members that walk our grounds.



MEDITATION TRAIL RESTORATION



October 8, 2023

Boy Scout Troop 461, spearheaded by Eagle Scout Oscar Morphis, aided in reviving our trails with new timber. Gravel was later added for a smoother walking experience.



FINAL CAMPUS SIGN INSTALLED

December 1, 2023

The final piece of our campus signage was replacing the worn-out road sign coming up from Rugby Road.



OUTDOOR CHURCH LIGHTING UPGRADED

December 16, 2023

Exterior environmental lighting has been replaced and upgraded. The runway, bell tower, campus signs and the Rugby Road handicap parking/ramp are now illuminated appropriately.



NEW PLAYGROUND



February 2, 2024

Our new playground behind the Annex building has been completely overhauled. It features six swings, a composite play structure, and a 13' tall climbing structure that welcomes kids (and adults) of all ages. The Playground also has a blanket of approximately 12" of engineered wood fiber under all of it to ensure safe fall zones.

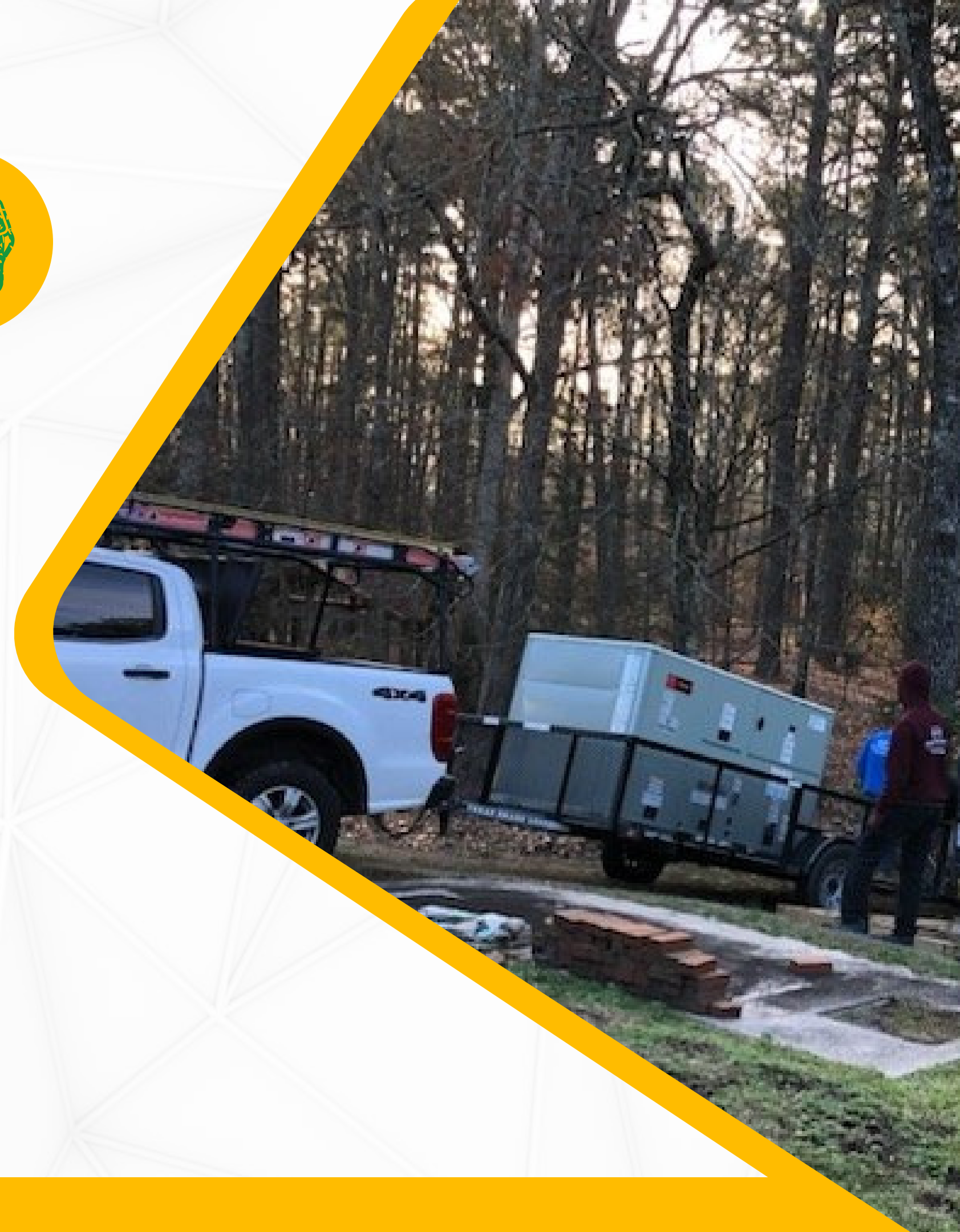


OFFICE HVAC INSTALLED



February 5, 2024

Alongside the Parish Hall HVAC replacement during the summer, the entire office building is now completely under new heating, cooling and air circulation. This system effected most of the staff offices as well as the library and nursery.



OFFICE & CHAPEL EXTERIOR DOORS REPLACED



February 12, 2024

The double doors that lead to the Church from the office as well as the Chapel have been replaced. These doors are much lighter, safer, and open automatically.

